

Automatically controlled movement **MCA**

The name of MCA has gathered over 13 years of experience, 90 persons involved in the production and distribution activities and the continuous desire of improvement.

The product offer is improved and extended with assembly services, technical support and specialized service.

The development strategy is directed towards establishing partnerships with the architecture bureaus, construction companies and entrepreneurs.

The products that we can provide in a high quality condition, good prices and with short delivery term are:

- Sectional and roller garage doors
- Industrial sectional doors
- Dock levellers and dock seals
- Fireproof doors and industrial roller shutters
- Automation systems for gates
- Window roller shutters
- Insect nets.

MCA Sectional Garage Doors



■ MCA România
Sos. Giurgiului 33A, Jilava, Jud. Ilfov
Tel: +40-(21)-457.00.03
Fax: +40-(21)-457.00.04
www.MCAgrup.ro
office@MCAgrup.ro

■ MCA Belgium
Rue Churchill, 26, 4624 Romsée
Tél: +32 (0)4.355.33.06
Gsm: +32(0)498.563.367
Fax: +32 (0)4.355.33.07

■ MCA Bulgaria
348 Botevgradsko Shose Blvd.
Sofia 1839
Tel: +35 929 45.10.15
Fax: +35 929 45.22.66

■ MCA France
Bd. De Lery, Bp 35
83180 Six Fours Les Plages Cedex
Tel: +33 617.97.56.07

■ MCA Republica Moldova
Str. Vasile Lupu Nr.18, Chişinău
Telefon : +37 379.70.94.00

■ MCA Srbija
Stevana Stevanovica 4,
11262 Velika Mostanica, Belgrade
Tel/Fax: +38 111 807.61.36
Mob.: +38 160 341.05.06

0104_UG_EN_08 11





MCA SECTIONAL GARAGE DOORS



FLUSH - GOLDEN OAK



FLUSH - GREY 7016



MIDRIB - GOLDEN OAK



MIDRIB - GREY 7016



RIB - WHITE 9016



RIB - MAHOGANY



CASSETTE - GOLDEN OAK



CASSETTE - MAHOGANY

Sectional door panels



FLUSH - WHITE - RAL 9002



FLUSH - BLACK - RAL 9005



MIDRIB - WALNUT



MIDRIB - BROWN - RAL 8017



RIB - WALNUT



RIB - BROWN - RAL 8017

HARMONY AND BALANCE

The garage door is the largest opening of the house and sometimes occupies even a third of its facade. For reasons of efficient use of room, in many cases, the garage is a part of the house and it leads to the street. Thus, the impact of the garage door over the thermal insulation and the appearance of the building is clear.

QUALITY, DIVERSITY AND EFFICIENCY

Optima garage doors can be made of a range of over 40 types of panels with different colors, and surfaces that mimic wood and multiple types of embossing. MCA doors can be customized with multiple glazing options and with low step wicket door.

Reliability and durability of the MCA garage doors are those which makes the investment in thermal comfort and good design in an effective long-term investment.



MCA SECTIONAL GARAGE DOORS



BUILT FOR A LIFETIME

Based on a technology with high quality standards, MCA Optima doors are designed to withstand more than 25 000 operating cycles. Try to calculate the number of years of usage based on this value, 25 000 cycles! We guarantee 10 years of flawless operation.

INCREASES THE VALUE OF THE HOUSE

Sectional automatic garage doors are very practical, giving your house a modern touch and increasing its value. The automations for MCA doors are endorsed by Sommer Germany. In addition, side doors made in tune with the garage doors give a uniform note to the house facade.

A STEP TOWARDS A SMART HOME

Automation is the future. If you think about a smart house, MCA has the solution. The command and control systems of the door can be connected to the management system of the building. In addition, one remote can control both the garage door and the access gate to backyard.

USE SPACE INTELLIGENTLY

Sectional garage doors opens vertically and run parallel to the ceiling surface. This way you will have more room into the garage and in front of it.

ADORNS THE FRONT OF THE HOUSE

We are confident that you enjoy your beautiful things and since the garage door may occupy an important place on the facade of your house, it should look perfect. Whatever your requirements are we have the solution. You can choose from a range of over 40 standard panels or one of RAL colors. We can offer this because we are manufacturers and we want you to be happy about your choice.

OPTIMAL INSULATION FOR WINTERTIME

40mm thick panels, elastic and resistant gaskets to climate change, make the MCA sectional garage doors an effective barrier in the way of wind, rain and snow. Side gaskets have been doubled for a superior insulation. Due to the experience with cold winters, MCA garage doors are constructed only with panels that can efficiently isolate your garage.

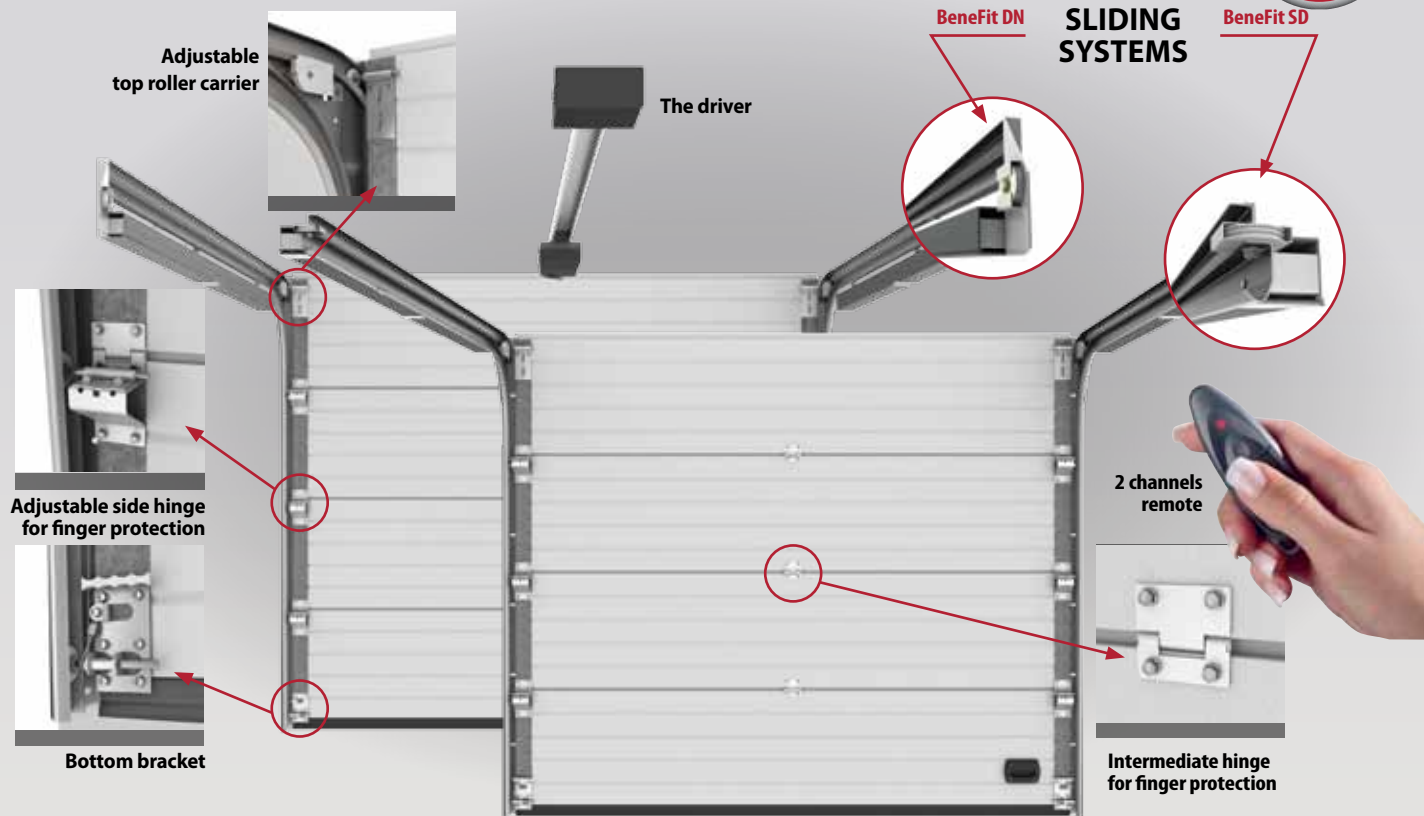
Sectional door panels



SECTIONAL DOOR SYSTEMS

BENEFIT - SECTIONAL DOORS WITH TRACTION SPRING

WARRANTY
5
YEAR

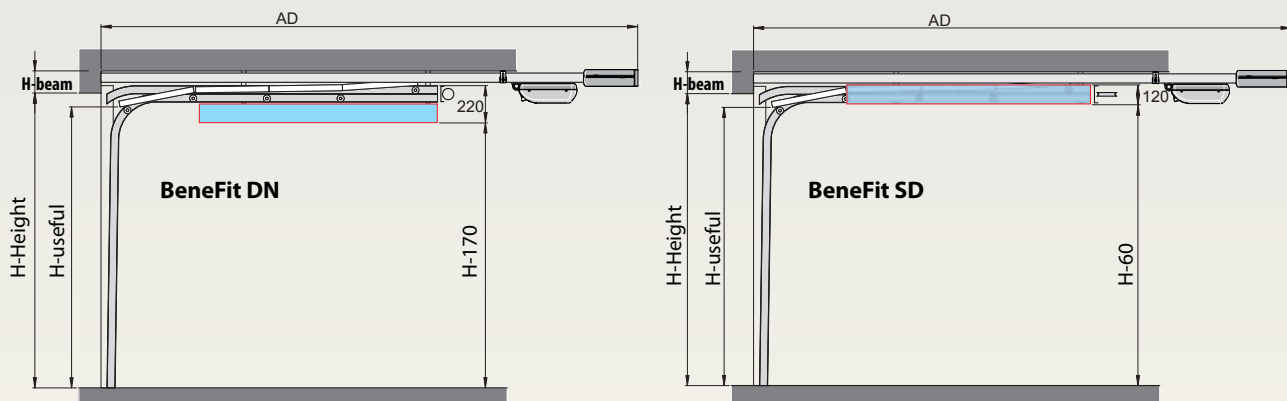


Standard dimensions for BeneFit sectional doors- Width x Height (mm)		
2500 x 2000	2500 x 2125	2500 x 2250
2700 x 2000	2700 x 2125	2700 x 2250
3000 x 2000	3000 x 2125	3000 x 2250

Benefit Sectional Doors

- Doors are made in standard sizes
- SD = springs located on the side of tracks
- DN = springs located under the sliding track
- Traction springs are guaranteed 15, 000 cycles
- Extended warranty up to 5 years

SLIDING SYSTEMS SECTIONS: BENEFIT SD & DN



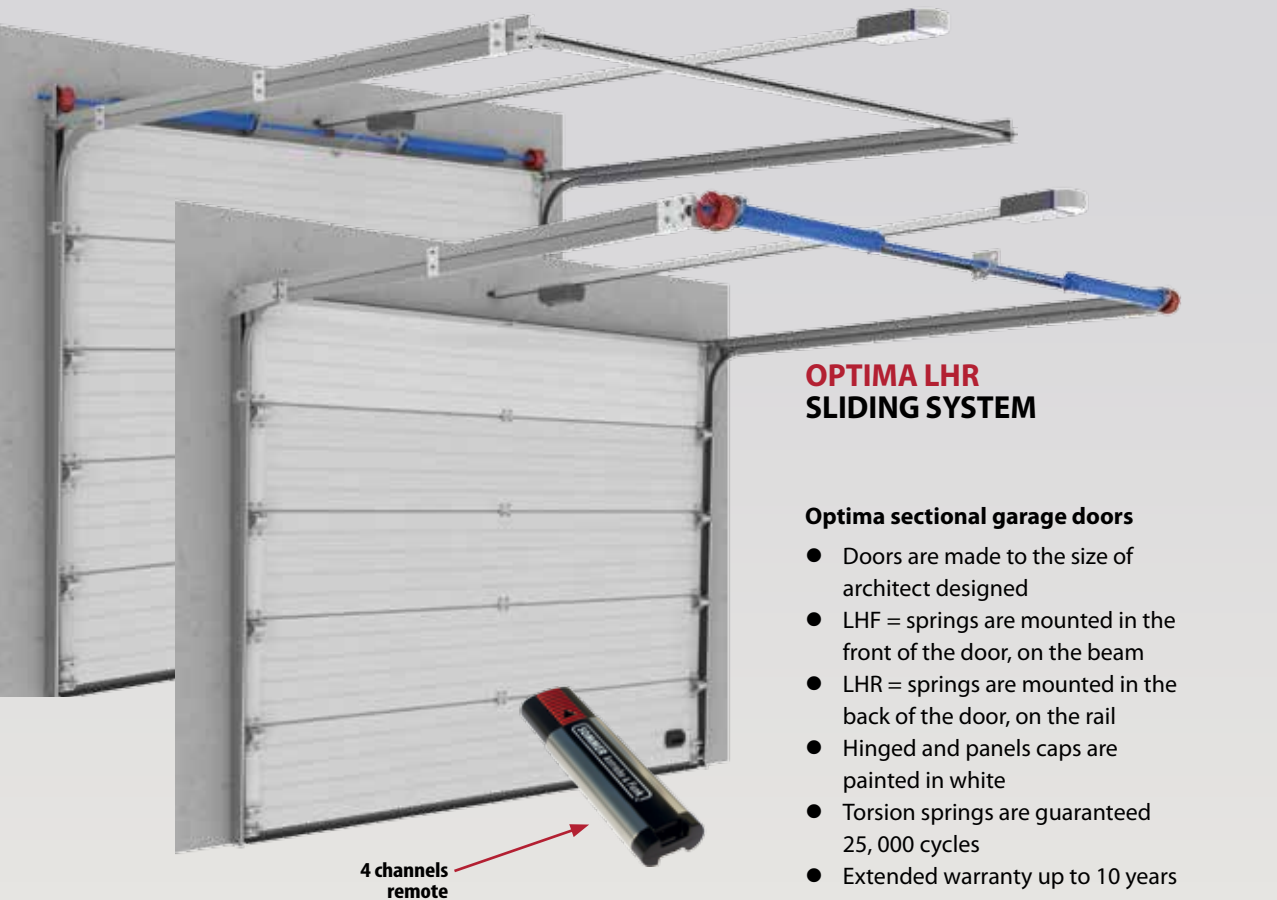
Required space for installation for BeneFit sectional doors (mm)									
Sliding Systems	W max	H max	H-beam		H-useful		Poles width (left&right)	Deep (AD)	
			Manual	Electric	Manual	Electric		Manual	Electric
SD	3000	2250	80	120	H-100	H-50	140	H+700	H+1100
DN							100		

Sliding systems for residential sectional doors.

WARRANTY
10
YEAR

SECTIONAL DOORS WITH TORSION SPRINGS

OPTIMA LHF SLIDING SYSTEM

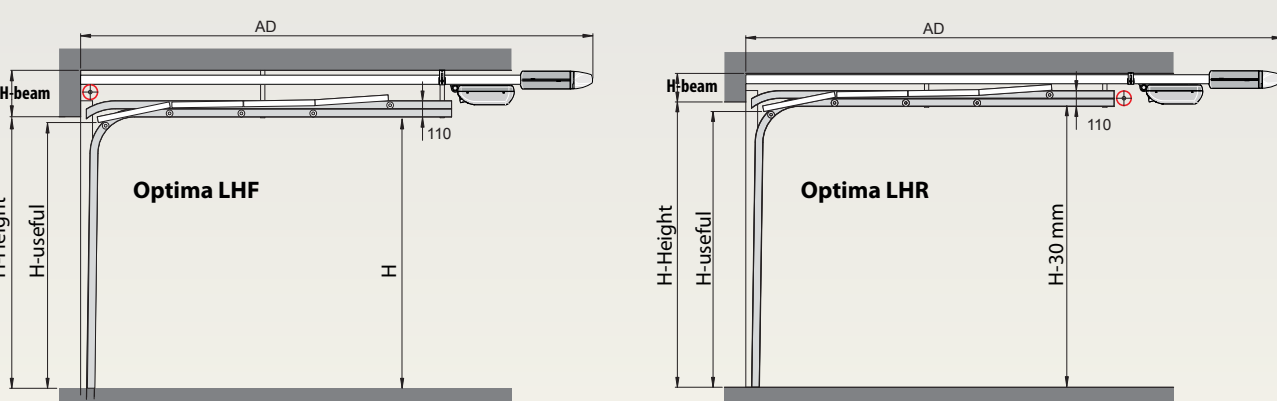


OPTIMA LHR SLIDING SYSTEM

Optima sectional garage doors

- Doors are made to the size of architect designed
- LHF = springs are mounted in the front of the door, on the beam
- LHR = springs are mounted in the back of the door, on the rail
- Hinged and panels caps are painted in white
- Torsion springs are guaranteed 25, 000 cycles
- Extended warranty up to 10 years

SLIDING SYSTEMS SECTIONS: OPTIMA LHF & LHR



Required space for installation for Optima sectional doors (mm)									
Sliding Systems	W max	H max	H-beam		H-useful		Poles width (left&right)	Deep (AD)	
			Manual	Electric	Manual	Electric		Manual	Electric
LHF	5000	3000	220	260	H-150	H-80	100	H+200	H+1100
LHR			110	160				H+450	

SECTIONAL GARAGE DOORS GLAZING



SECTIONAL GARAGE DOORS GLAZING

Sectional garage doors glazing are generally used for two purposes: to use the natural light inside the garage and the garage door integration in the building facade design. Based on the architects requests MCA developed many glazing solutions with windows of different shapes and sizes. The windows frames can be made of black PVC or stainless steel.

Round windows D = 330



Rectangular windows 640 x 340



Glazed panel (anodized aluminum)



Rectangular windows 610 x 140



SUN windows



Grid windows



Wicket doors



WICKET DOORS

In many cases we keep in the garage more than a car. The bicycle is the most commonly hosted there also. Without completely opening the garage door you can quickly access what is in your garage. In addition, if there is another access door to the garage, it can be made of the same material as the sectional door.

- The access in the garage can be made also through the wicket door.
- The low step wicket door allows easy access into the garage with bikes and strollers.
- To harmonize with the garage door, lateral doors can also be made.
- The wicket door is provided with a silencer fitted on the upper side to ensure its closure, this way avoiding accidental damage.
- Door frame and handles are of anodized aluminum, aesthetic and corrosion resistant.

Wicket door for lines model.



Wicket door for cassette model

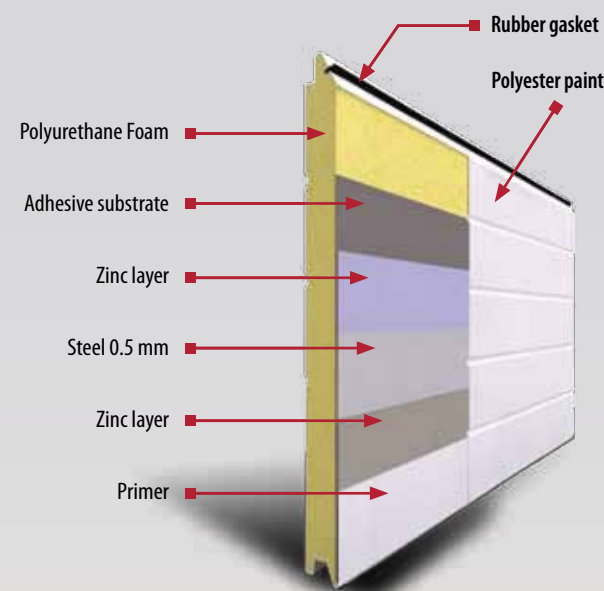


Separate door



TECHNICAL DATA

MCA SECTIONAL DOOR PANEL FEATURES

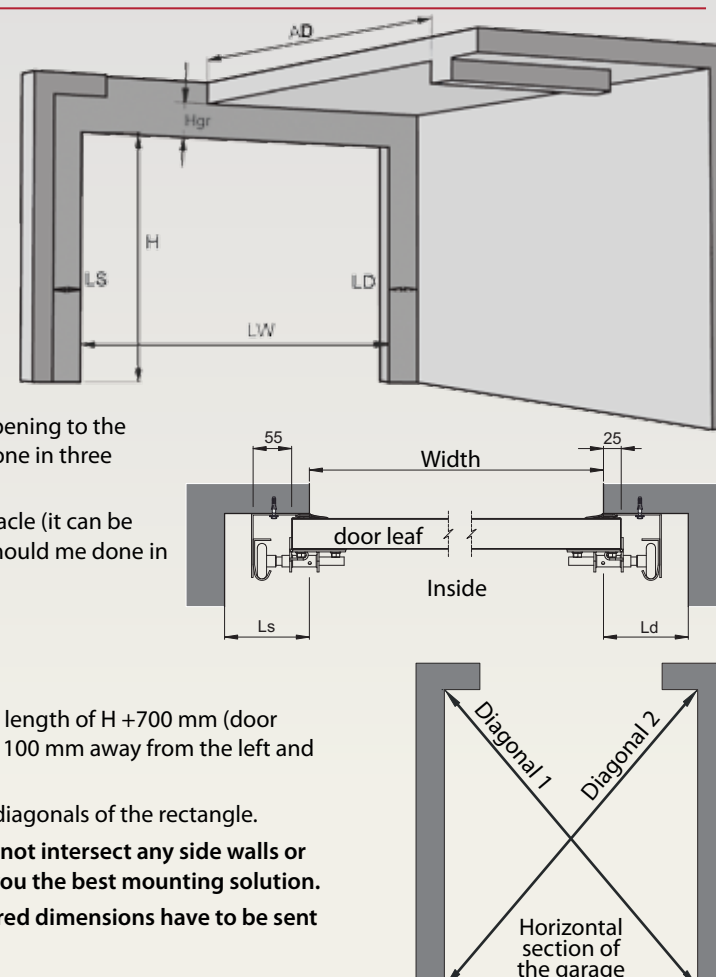


- Thermal insulation**
 The panels are filled with polyurethane foam with excellent insulating properties. At the same thickness the foam gives a double degree of insulation comparing with polystyrene.
- Mechanical strength**
 Galvanized steel sheet panels filled with 40 mm polyurethane foam. In case of the embossed (woodgrain, stucco) panels the steel sheet has 0.5 mm thickness and in case of the slick panels the sheet has 0.7 mm thickness.
- Anti-finger grip**
 The shape of the panels has been designed to avoid trapping fingers when it is manually operated.
- Uniform color and resistant.**
 Through the painting process, the color layer is applied evenly and lasting through the whole panel surface.
- Corrosion Resistance**
 The steel that panels are made of is protected against oxidation with layers of zinc (galvanized steel).

HOW TO MEASURE THE SECTIONAL GARAGE DOOR OPENING

Steps to measure your garage door:

- Measure the width (W) of the opening in three points: bottom, middle and top. Choose the biggest value.
- Measure the height (H) of the opening in three points: left, right and middle. Choose the biggest value.
- Measure the width of the right pole (Ld) (the distance from the opening to the first obstacle in right side) in three points: low, middle and top. Choose the smallest value.
- Measure the width of the left pole (Ls) (the distance from the opening to the first obstacle in left side) in three points: bottom, middle and top. Choose the smallest value.
- Measure the height of the lintel (HGR) - is the distance from opening to the ceiling or to the first obstacle. The measurement should be done in three points: left, right and middle. Choose the smallest value.
- Measure the ceiling depth (AD) from the lintel to the first obstacle (it can be another beam or rear wall of the garage). The measurement should be done in three points: left, right and middle. Choose the smallest value.
- Measuring the diagonals across the ceiling.
Create an imaginary rectangle on the ceiling as follows:



- One line is the lintel
- Two parallel lines, perpendicular on the lintel and with the length of $H + 700$ mm (door opening height + 700 mm). Each of these two lines will be 100 mm away from the left and right pole's edges.
- The last line will close the created rectangle. Measure the diagonals of the rectangle.

The diagonals must be equal, so the created rectangle does not intersect any side walls or beams. If this does not happen, contact a specialist to give you the best mounting solution.
When an order for a garage door is placed, all these measured dimensions have to be sent (W, H, Ls, Ld, Hgr, AD).

Automation

SOMMER APERTO FOR BENEFIT DOORS

Linear operator, manufactured in Germany for Benefit MCA Sectional garage doors



The driver

- Reliability and durability due to operational technology
- Chain requires no maintenance, not anointed, which means that there is no danger of oil slicks
- Locking system against thieves

Control unit

- Includes the radio receiver (FM 868.8 MHz and 112 memory slots)
- Automatic detection of obstacles: automatic lifting when encountering obstructions
- Technology for automatic adjustment of labor (Dynamic Power System): Calculate the force necessary to drive the door automatically, adjusting to a maximum safe operating

2 channels remote

SOMMER - SPRINT EVOLUTION & DUO RAPIDO FOR OPTIMA GARAGE DOORS

Linear operator, manufactured in Germany for Optima MCA Sectional garage doors



The driver

- Reliability and durability due to operational technology
- Chain requires no maintenance, not anointed, which means that there is no danger of oil slicks
- Locking system against thieves

Control unit

- Includes the radio receiver (FM 868.8 MHz and 112 memory slots)
- Integrated lighting lamp
- Automatic detection of obstacles: automatic lifting when encountering obstructions
- Technology for automatic adjustment of labor (Dynamic Power System)

Emergency release

- The unique SOMMER emergency release system means the gate can be opened (unlocked) and locked manually in any position. Only with SOMMER is your gate locked (closed) during a power failure as well. This offers you optimal safety in any situation..

ACCESSORIES

